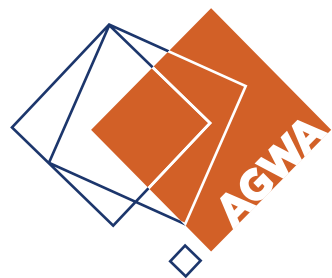


MASTER GLAZIER PROGRAM

PROGRAM MANUAL



MASTER GLAZIER

AUSTRALIAN GLASS AND WINDOW ASSOCIATION
SUITE 1, LEVEL 1, BUILDING 1, 20 BRIDGE STREET, PYMBLE NSW 2073
T. +61 2 9498 2768 E. admin@agwa.com.au W. www.agwa.com.au



AUSTRALIAN
GLASS & WINDOW
ASSOCIATION

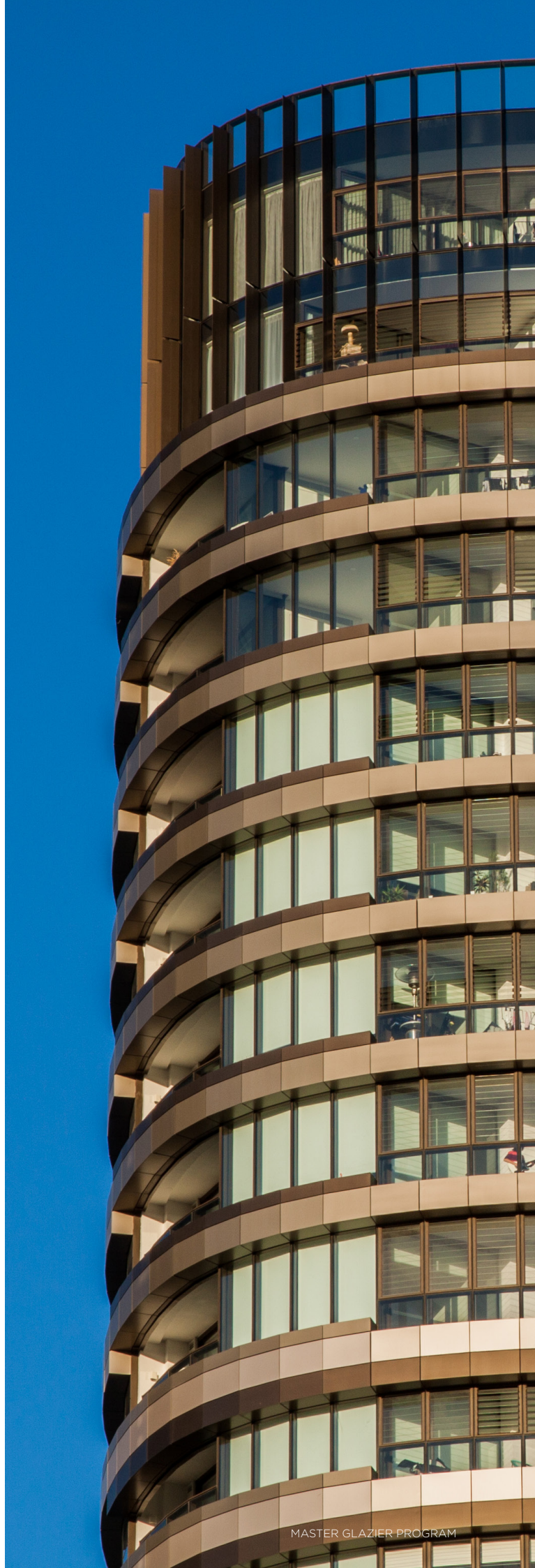
ABOUT GLASS AND GLAZING IN AUSTRALIA

Australia has approximately 11,000 glaziers across the industry and contributes \$4.5 billion annually to the national economy. Businesses are located in all states and territories in Australia, with almost half operating in regional and remote areas.

The Australian Glass and Window Association promotes and encourages trade and business interests of its members and provides them with information and advocacy services on all aspects of windows and glass, including energy efficiency, Australian Standards, safety compliance and skills training.

The Master Glazier program is run with a 'Continuing Professional Development' (CPD) program that is available to all qualified (or in training) glaziers, irrespective of whether they are employed by a member company. The program will provide a defined career path that starts with an Apprentice becoming a qualified glazier, then moves on to becoming a Certified Glazier, with the aim/option to eventually becoming a Master Glazier.

AGWA's role is to provide the opportunity for prospective apprentices and employers to participate in a challenging and rewarding career.





MASTER GLAZIER PROGRAM

The Master Glazier program is run as a stand-alone program which is available to all active or in training glaziers, whether they are employed by a member or non-member company. This is to encourage a larger proportion of the industry to participate and encourage more companies to be involved with the glass industry's development and growth.

The program provides a defined career path that starts with an apprentice, moves on to becoming a Foundation Glazier, with the aim to eventually achieving either Certified or Master Glazier status. Glaziers can select at which level they become involved in the program.

As well as the assessment of qualifications and experience, the program includes ongoing professional development (CPD) requirement. Ongoing training and development ensure a profession that is current and up to date with changing trends and standards. CPD requirements maintain and enhance the knowledge and skills you need to deliver a professional service to your customers, clients and the community. CPD ensures that your knowledge stays relevant and up to date.

APPRENTICE GLAZIER

- Currently undertaking a Cert III Glass and Glazing with a Registered Training Organisation
- Access to member prices for training courses and events
- Access to E newsletter
- Access to Technical Fact Sheets and Industry Code of Practice updates to keep abreast on emerging trends
- No requirement to undertake any additional CPD (currently studying)
- Annual renewal process
- Application fee of \$0

FOUNDATION GLAZIER

- Must hold Cert III Glass and Glazing (MSF30413, MSF30418 or equivalent)
- Access to member prices for training courses and events
- Access to E newsletter
- Access to Technical Fact Sheets and Industry Code of Practice updates to keep abreast on emerging trends
- 5 CPD points required per year
- Application fee of \$0

CERTIFIED GLAZIER

- Must hold Cert III Glass and Glazing (or equivalent)
- 6 years glazing experience
- Provide two industry references
- Submit a work portfolio showing expertise in two areas of specialisation/areas of expertise
- Access to member prices for training courses and events
- Access to E newsletter
- Access to Technical Fact Sheets and Industry Code of Practice updates to keep abreast on emerging trends
- 10 CPD points required per year
- Application fee of \$150



MASTER GLAZIER

- Must hold Cert III Glass and Glazing (or equivalent)
- 10 years of glazing experience
- Provide two industry references
- Submit a work portfolio showing expertise in at least two areas of further specialisation / area of expertise.
- Access to member prices for training courses and events
- Access to E newsletter
- Access to Technical Fact Sheets and Industry Code of Practice updates to keep abreast on emerging trends
- 10 CPD points required per year
- Application fee of \$ 150

PROGRAM ANNUAL FEE

\$100 PER YEAR

\$0 PER YEAR - AGWA Member Employee

Examples of areas of specialisation / area of expertise

- Window repair and replacement
- Shower Screens
- Pool fencing
- Balustrades
- Splashbacks
- IGU manufacturing/installation
- Frameless Assemblies
- Window fabrication
- Glass Processing
- Glazing Repair and Replacement
- Commercial façade



APPLICATION PROCESS

All applications will be lodged using AGWA documentation. Review of applications will be conducted within 4-5 weeks from lodgement of application and results sent to the applicant once determined.

Should the application not be successful the applicant will receive the reason why and what is required to complete the application successfully.

Email Melissa Baker on Melissa.baker@agwa.com.au for more information or visit the website on <https://www.agwa.com.au/members/master-glazier>





THE AGWA MASTER GLAZIER PROGRAM

Continuing Professional Development (CPD) is defined as further education following completion of either formal or informal training.

CPD consists of any educational activity which helps to maintain, develop or increase knowledge, problem-solving, technical skills or professional performance standards.

CPD programs can include any formal activity such as

- relevant short courses offered by AGWA or other industry associations
- attending conferences
- formal external training e.g. certificate or non-certificate courses
- in-house training sessions
- technical or product demonstrations/workshops run by product suppliers
- reading trade journals and searching industry websites
- mentoring
- active participation in relevant AGWA committees

For a comprehensive list of CPD point allocations, from formal training workshops to conferences to online learning options **see Appendix 1.**

CPD REQUIREMENTS

APPRENTICE GLAZIER	Currently completing Certificate III in Glass and Glazing – no CPD required.
FOUNDATION GLAZIER	5 CPD points per year (10 points can be gained over 2 years).
CERTIFIED GLAZIER	Completed Certificate III in Glass and Glazing Experience in the glazing sector 10 CPD points per year (20 points can be gained over 2 years).
MASTER GLAZIER	Completed Certificate III 10 years glazing experience Demonstrated expertise in 2 specialist areas minimum 10 CPD points per year (20 points can be gained over 2 years).

WANT TO KNOW MORE?

For further information or to receive an application form please contact

Melissa Baker

National Training and Safety Manager
(02) 9498 2768 (Ext 409)
melissa.baker@agwa.com.au



Master Glazier Program CPD Point Allocation

1 POINT PER HOUR ACTIVITIES (Activities with no Exam)



- ✓ Seminars, Workshops, Conferences, Forums
- ✓ News or Trade Sessions
- ✓ Short Courses without Formal Assessment
- ✓ Online or CD-Rom based Courses without Formal Assessment

Delivered by, for example:

Industry associations eg. AGWA, MBA, HIA
Government agencies eg. Fair Trading, Building Professionals Board
Suppliers of materials and/or services
Manufacturers of new products
Private training companies and/or Community Colleges and Adult Education Centres.



2 POINT PER HOUR ACTIVITIES (Activities with Exam)



- ✓ Online course or industry fact sheet with marked assessment
- ✓ Formal assessed learning from a relevant Australian Training Package or an Australian university qualification.

Delivered by, for example:

TAFE, Other Registered Training Organisations, an Australian University
Industry associations eg. AGWA, MBA, HIA or SPASA
Government agencies eg. Fair Trading, Building Professionals Board
Suppliers of materials and/or services
Manufacturers of new products
Private Training Companies and/or Community Colleges and Adult Education Centres.



ADDITIONAL CPD POINTS



- ✓ Industry Organised Social Events (eg Golf Days) with guest speakers – 1 CPD per event up to a maximum of 6 CPD per 2 year period
- ✓ Industry Magazine Subscription – 1 CPD per year
- ✓ Self Directed Learning by reading Industry reviewed update articles or publications with no assessment – 1 CPD point per article up to a maximum of 4 CPD per 2 year period
- ✓ Board and Committee Participation – 1 CPD point per ½ day of meeting time to a maximum of 10 CPD per 2 year period
- ✓ Mentoring of an apprentice as part of an RTO delivered program – Certified Glazier 4 CPD and Master Glazier 6 CPD per 2 year period
- ✓ Teaching in VET or higher education on relevant programs – 1 CPD for every 2 hours of training up to 6 CPD for Certified Glaziers and 10 CPD for Master Glaziers per 2 year period.